



PREPAINTED STEEL EXPERT



HONOR STEEL NEAR CUSTOMER

 Tel: 0086 22 6565 7971

 Mob: 0086 186 2210 0875

 Email: info@steelhighsen.com

 Website: www.steelhighsen.com

 Address: Room 903, Unit 1, Building 6, Ronghe Plaza, Airport Economic Area, Tianjin, China

天津海晟祥时国际贸易有限公司
TIANJIN HIGHSEN TRADING CO.,LTD.

CONTENTS



About Us

01-02

Products

03-16

Quality Assurance

17-18

Packaging

19-20

Shipment

21-22

Product Service

23-24

About us



Steelhighsen is a distributor, founded by a group of entrepreneurs and professionals with more than **10 years** of experience in the global steel industry.



We focus on coated steel like Galvanized, Galvalume and Prepainted steel (PPGI & PPGL).



\$250 Million+
Per Year

250+ thousand tons
per Year

Steelhighsen provide with **ISO 9001:2015** certification



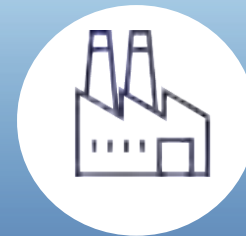
Customer

We have established strong market presence in Asia, Europe, Africa, Middle East, and South America.



Partnership

We have forged partnership with major steel companies in China, including Baosteel, HBIS, Shougang, and Angang.



Warehousing

Steelhighsen has set up dedicated warehouses in China and partnered with slitting and cutting centers to enhance logistics efficiency and distribution capabilities.



Logistics

We have formed close cooperative relationships with mainstream shipping companies. Through our cooperation with them, we are able to ensure that the goods arrive at their destinations on time and in good condition.



Products

Keep Improving
Professional Service
Create with Heart

Brief Introduction

PPGI/ PPGL

Definition

Prepainted steel coil is coated with organic layer, which provides higher anti-corrosion property and a longer lifespan than that of galvanized steel sheets.

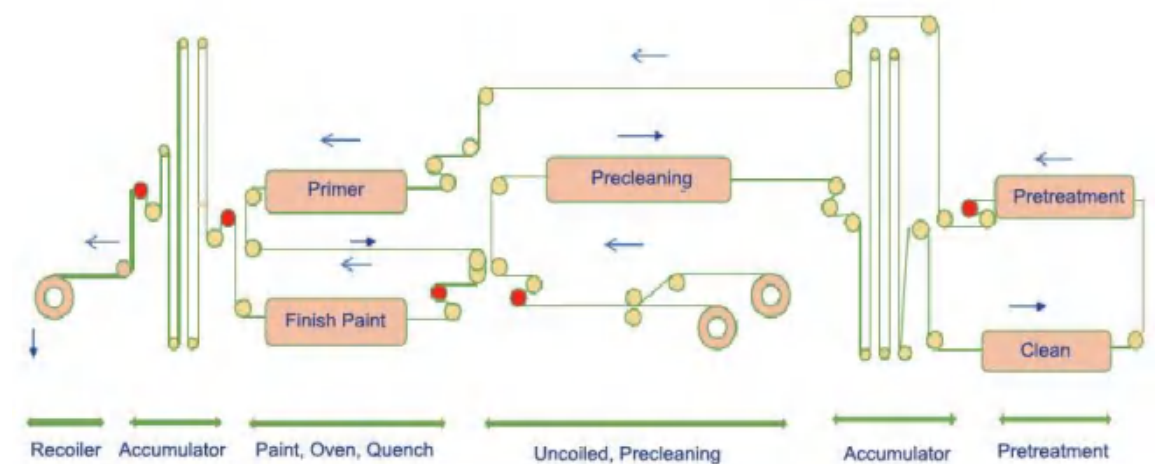
Feature

Prepainted steel coil has the characteristics of aesthetic appeal, durability, workability and environmental friendliness.

Application

It is widely used in construction, home appliances, transportation, and furniture industries.

Process Route



Application in Construction

Residential Buildings

It is used for making roofings and wall cladding.



Public Buildings

It is used for making roofings and wall cladding.



Industrial Buildings

It is used for making roofings and wall cladding.



Specification

Size	0.1-2.0mm (Thickness) x 600-1500mm (Width)
Substrate	Galvanized Base(PPGI),Galvalume Base (PPGL), ZAM Base
Coating	Z20-Z275(PPGI), AZ30-AZ185(PPGL), ZM30-ZM600(PPAM)
Grade	EN, ASTM, JIS, AS, GB
Paint	Top: 4+8mic/ 5+10mic/ 5+15mic/ 5+20mic Back: 5-7mc primer only or 5+10mic/ 5+15mic/ 5+20mic Paint Type: Epoxy, PE, SMP, HDP, PVDF Color: RAL color or follow customers sample
Functional paint	Self-cleaning, Antistatic, Antisepite, Adiabatic
Surface finish	Normal coated, Embossed, Printed, Checker, Suede, Pearly lustre, Anti-scuffing
Protective film	PVC, PE, PET, PU, Paper-based protective film
Coil ID	508mm
Coil Weight	3-10MT
Remarks	Coil, strip, sheet and corrugated sheet available



Reference List of Similar Steel Grades

EN 10346:2015	ASTMA653/ A792	JIS G3302:2005	GB/ T2518	AS 1397-2011
DX51D	CSType B CSType C	SGCC	DX51D	—
DX52D	FS	SGCD1	DX52D	G2
DX53D	DS	SGCD2	DX53D	G3
DX54D	—	—	DX54D	—
S220GD	—	—	S220GD	—
S250GD	Grade 255	SGC340	S250GD	G250
S280GD	Grade 275	SGC400	S280GD	—
S320GD	—	—	S320GD	—
S350GD	Grade 340 Class 1	SGC440	S350GD	G350
S390GD	—	—	S390GD	—
S550GD	Grade 550 Class 1	SGC570	S550GD	G550

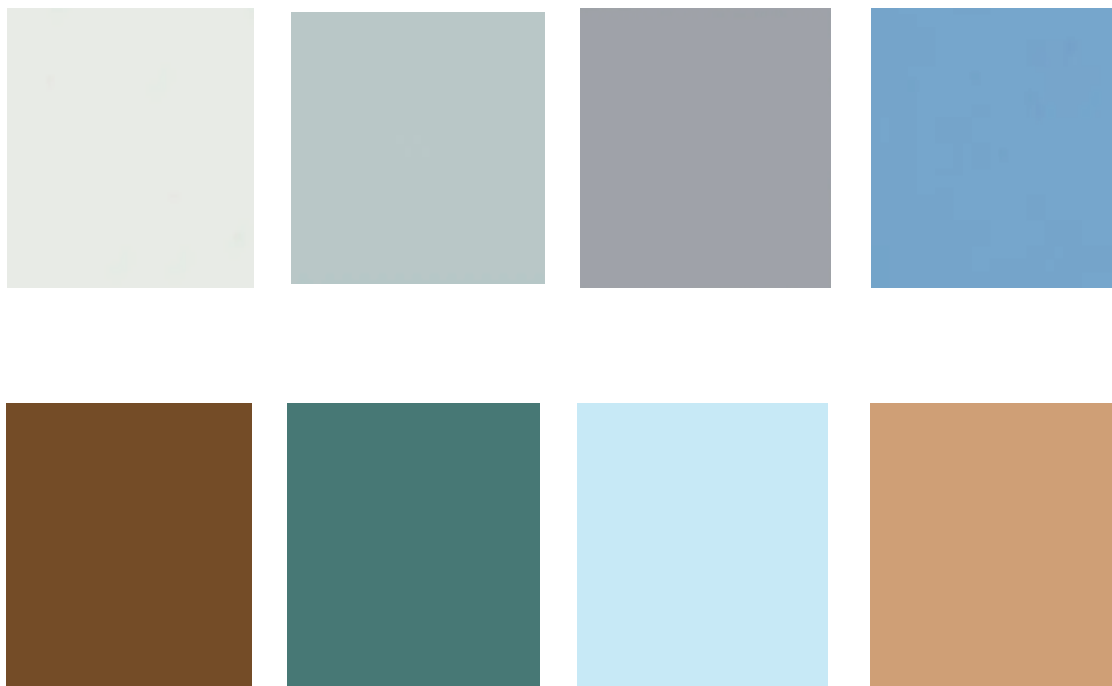


Color Match

According to RAL Color System



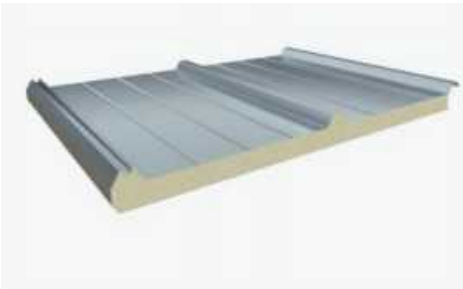
As per Buyer's Color Sample



Paint Structures

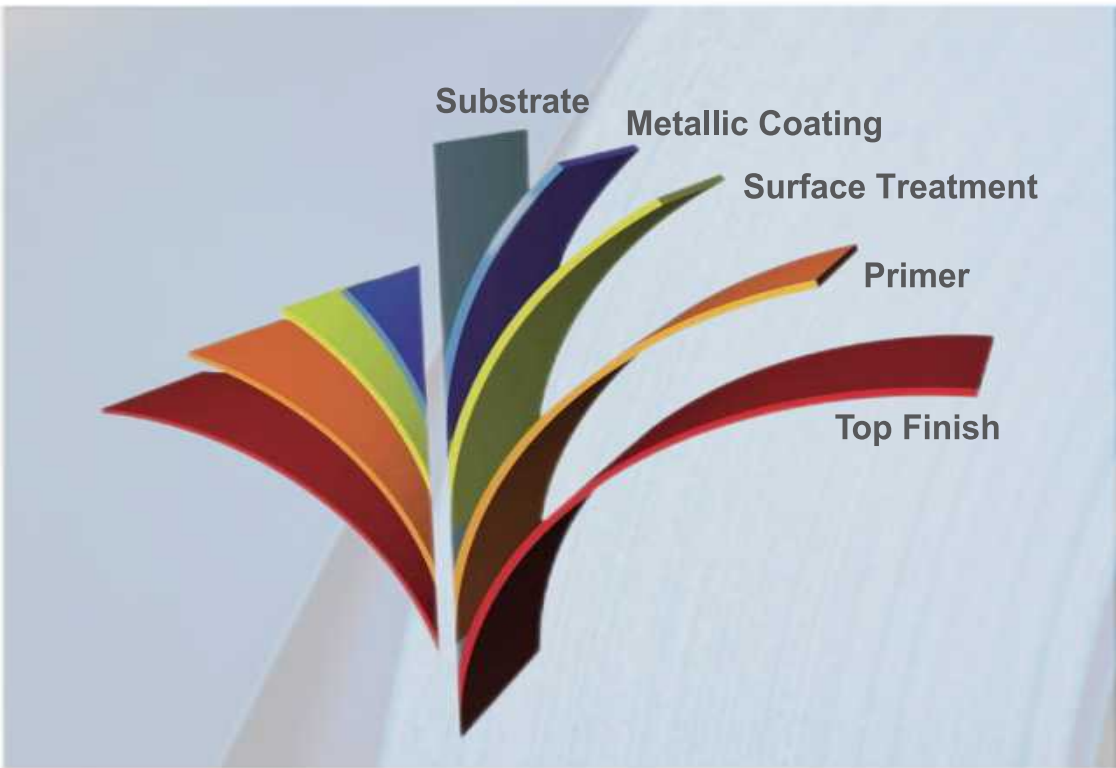
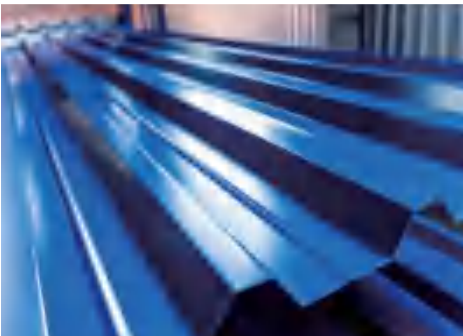
2/1

It is mainly used for sandwich panels, which require the coating to have good bonding and foaming properties.




2/2

The anti-corrosion property, scratch resistance and processing property of the backside coating of prepainted steel coil is better, so it is widely used for roll forming. But its adhesive property is poor, so it is not used for sandwich panel. It is used as a single steel sheets.



Primer Category

 Primer categories include epoxy, polyester, acrylic acid, and polyurethane. The choice of primer depends on usage, environmental conditions, processing stage, and finish coat.

Epoxy

- Strong adhesion
- Waterproof
- Alkali-proof
- Chemical resistance

Polyester

- Strong adhesion
- Excellent flexibility
- Sensitive to damp environments

Water-soluble Acrylic Acid

- Strong adhesion
- Excellent flexibility
- Low-temperature curing

Polyurethane

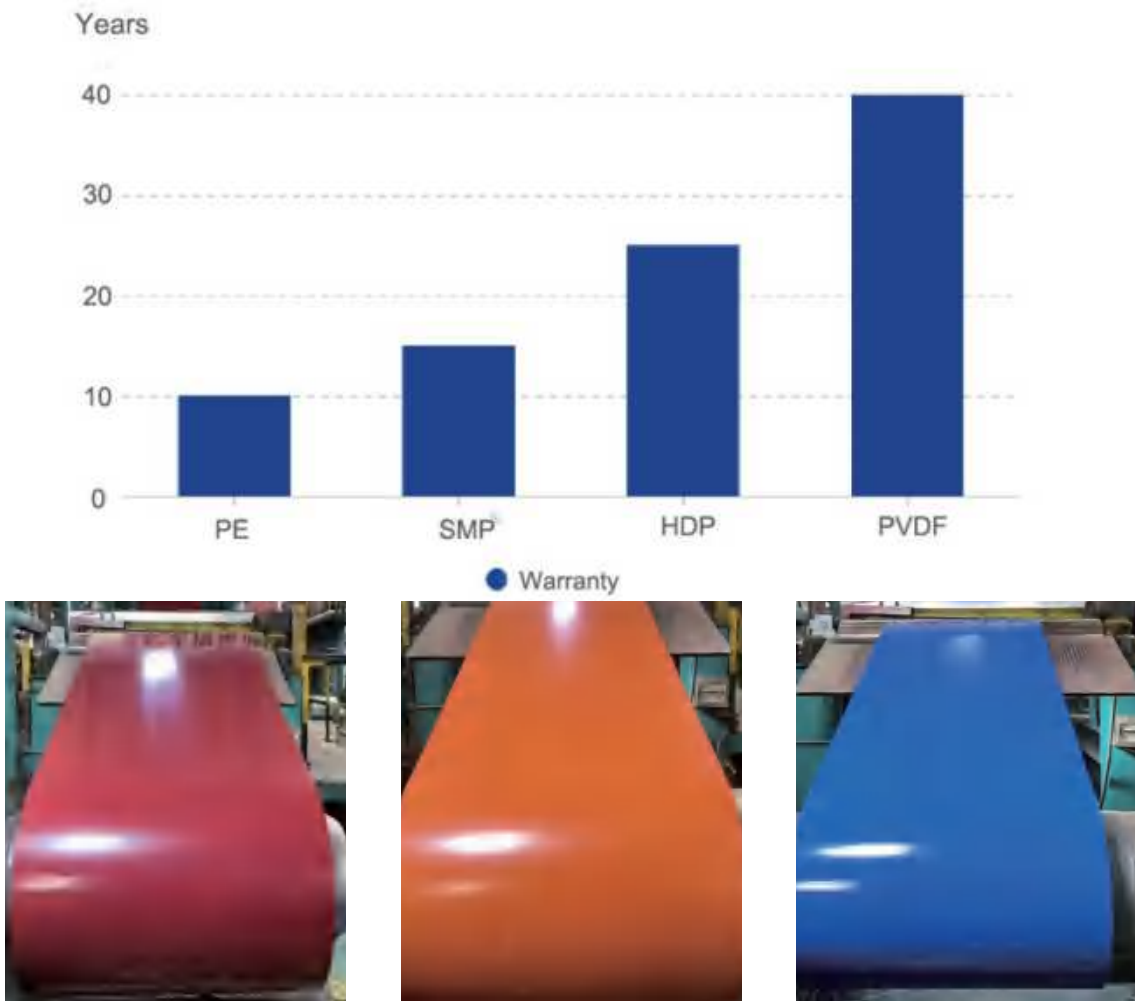
- Excellent chemical resistance
- Durability
- Flexibility



Types of Finish Paint

Comparisons of different finish paint

Items	PE	SMP	HDP	PVDF
Coating Hardness	excellent	good	good	ordinary
Bend	good	ordinary	excellent	excellent
Corrosion Resistance	good	good	good	excellent
Weather Resistance	good	excellent	excellent	excellent
Cost	excellent	good	good	ordinary



Functional Paint

Self-
static



Anti-static prepainted steel sheet is coated with a special material to prevent the buildup of static electricity. This is useful in environments where static electricity can pose a risk.

Self-
bacterial



This type of sheet is formulated with antibacterial properties, making it suitable for applications in environments where hygiene is a priority.

Self-
reflective



This type of coil is designed to reflect heat, helping to maintain a cooler temperature in buildings and reducing energy consumption for air conditioning.

Livestock
Industry



It is durable, easy to clean, and corrosion-resistant. It provides a safe and hygienic environment for livestock in barns and other agricultural structures.

Protective Film

PVC Protective Film

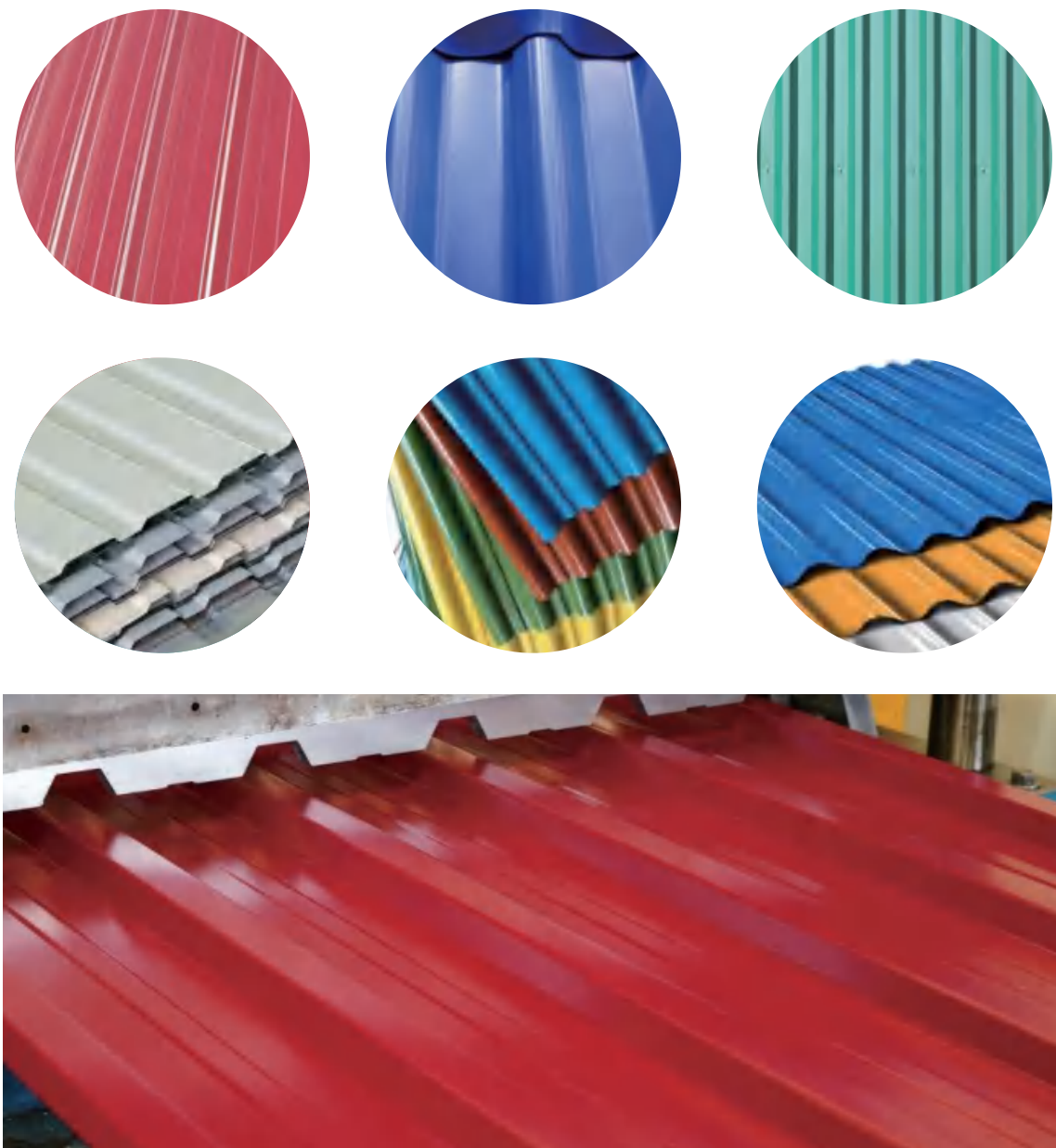
A common type of protective film with good weather resistance and wear resistance, which protects the surface of the steel coil from damage during processing and transportation.

In addition to PVC protective film, there are PE protective film, PET protective film, PU protective film, and Paper-based protective film.



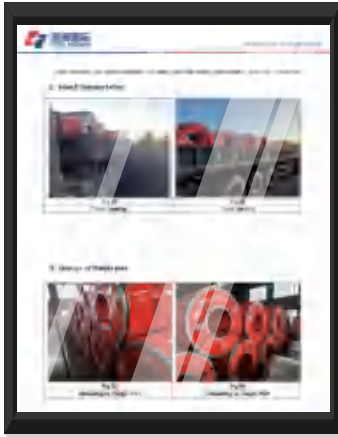
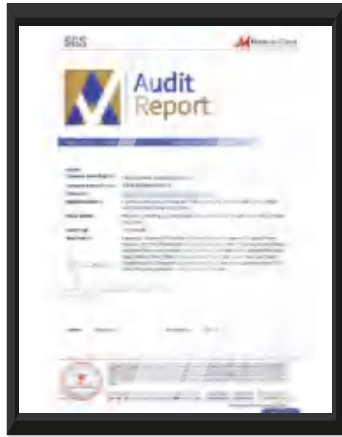
Corrugated Prepainted Steel

Corrugated prepainted sheet is created by rolling prepainted steel into a variety of corrugated sheets. The design can be customized to meet the specific requirements of each customer.



Quality Assurance

Steelhighsen promises that every order will undergo comprehensive quality monitoring, from raw materials to finished products, from appearance to performance, from mill to vessel, to ensure product quality comprehensively, to meet or even exceed customer expectations.



Quality Control



Width Test



Thickness Test



Paint Thickness Test



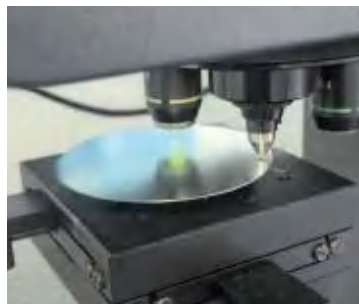
Gloss Measure



T Bend Test



Zinc Coating Test



Hardness Test

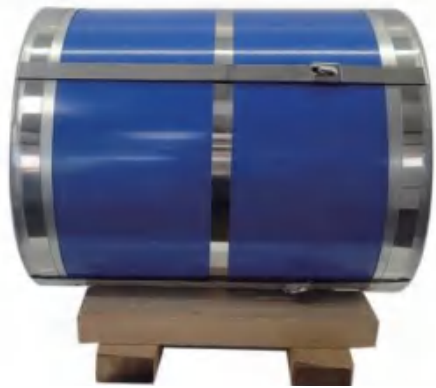


Mechanical PropertiesTest



Packaging Test

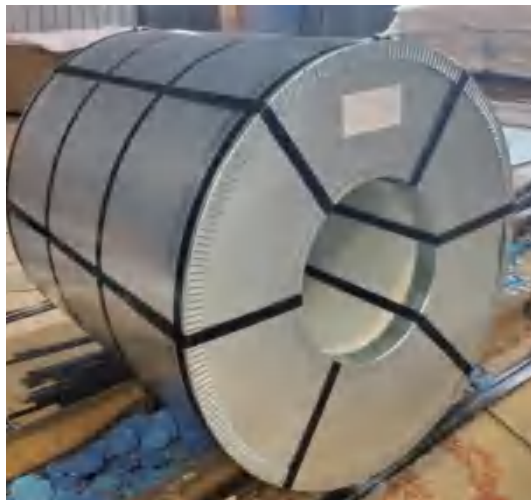
Packaging



Eye to Wall



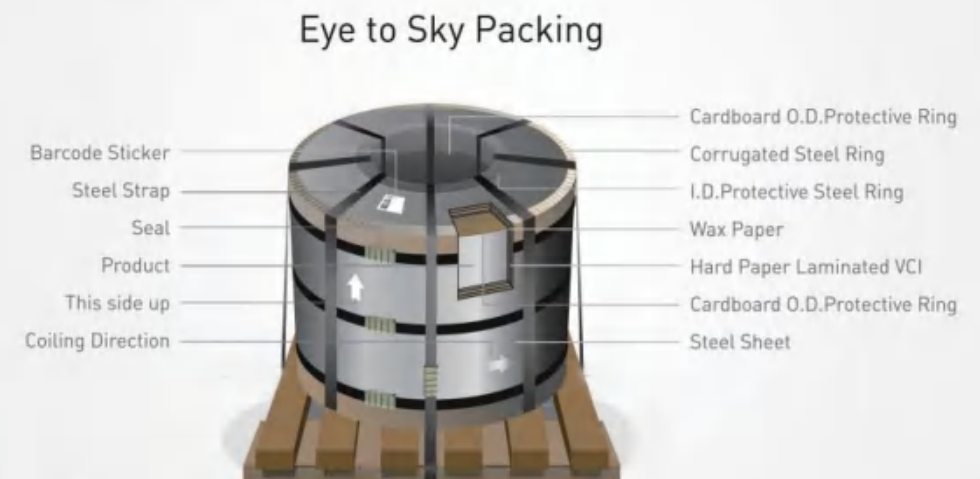
Eye to Sky



Horizontal Packaging



Vertical Packaging



Shipment

*We Provide both
Container & Bulk shipment.*

Container Shipment



Bulk Shipment



Sales Service System

Pre-sale Service

- 01 Provide detailed instruction data and standards of PPGL.
- 02 Serve users with instructions on correct selection of material.

In-sale Service

- 01 Contract track.
- 02 Provide detailed user order tracking information to ensure punctual goods delivery.

After-sale Service

- 01 Provide QC report.
- 02 Collect customers' informaion through various means, sort and classify the information, feed back information to users and satisfy users' requirements.

Ordering Guide

ITEM	INFORMATION	EXAMPLE
1	Substrate	Galvanized steel sheet in coil
2	Grade	TDX51D+Z
3	Size (thickness x width)	0.6mm x 1200mm
4	Coating weight (g/m2)	Z120
5	Paint	Top: 5+20mic Back: 5+7mic Paint type: Polyester(PE), Epoxy
6	Coating color	RAL7031
7	Protective film	30um
8	Coil ID	508mm
9	Coil weight	3-5MT
10	Order quantity (metric ton)	500
11	Packaging type	Eye to Wall packing
12	Shipment	By Container